

Enjoy Kašperské Hory

Nature trails and walking circuits

The surroundings of Kašperské Hory offer several interesting nature trails and hiking routes. A map of these trails with a short description is available at the information centre or at www.kasphory.cz.



Town guided tours from June to September, regular guided tours of the town take place. Tickets can be purchased at the information centre in the Town Hall.

Geocaching for enthusiastic seekers of hidden "treasures", mysterious legends and the wild Šumava nature, there are 10 well-hidden boxes located in the vicinity of Kašperské Hory. A map with clues is available at the information centre or at www.kasphory.cz.

Town Hall Gallery on the ground floor of the Town Hall, one of the largest box nativity scenes in the country is open all year round. The gallery also includes various exhibitions throughout the year.

Šumava Mountains Museum you can find here permanent exhibitions of glass making, gold mining, ancient Šumava history, patrimonial and natural history collections.

Czech Toy Exposition this collection contains approximately a thousand of exhibits that will remind you of the time your childhood and children's games.

Historic Motorcycle Museum come and see the largest private collection of historic motorcycles and bicycles in the country.

Seismometry Museum You will find the museum in the original building of the seismic observatory. The tour includes a walk through the Kristýna drift that is about 200 m long.

Multi-functional sport hall A new sports hall offers the possibility of short-term rental for individual sports facilities. You can try sports such as: badminton, tennis, football, floorball, fitness activities and many others.

The Šumava National Park Information Centre The site offers an interactive exhibition informing on the uniqueness of the Šumava nature, a projection room, educational trail and a number of programmes for the public.

Traditional events in the town and at the castle

There are numerous cultural events held in Kašperské Hory throughout the year. Regular events include Easter festivities, the Kašperské hory Pilgrimage of Our Lady of the Snows in August, the town festival in September and the film festival during the autumn holidays. During the year, other activities are also carried out in the form of film screenings in the cinema, talks, theatre performances, musical performances, events for children, etc. You can find out everything in the calendar of events on the website www.kasphory.cz and on social networks.



Various cultural events are regularly held at Kašperk, most notably theatre performances, concerts, swordplay performances or "revived courtyards". Traditional events include, for example, the every year August theatre performances by the theatre society Spolek Kašpar from the theatre Divadlo v Celetné, summer night tours specific topic focused Days of the Šumava Three Castles (in cooperation of the castles Kašperk, Rabí and Velhartice) that take place in June and September (for details see www.trojhradi.cz)

The current programme is always available at www.kasperk.cz or at:



Accommodation, winter activities

Accommodation in the Kašperské Hory Hostel The sport and tourist Kašperské Hory hostel is an affordable and quality accommodation facility for both groups and individuals.

Mountain Club Premises fit for family events, workshops and lectures. You can rent a hall with the capacity of 120 seats, a kitchen or club rooms.

White Cross Country Skiing Trail in the Surroundings of Kašperské Hor There are 20 km of cross country skiing trails available in the town surroundings for those who love this sport provided the weather conditions are favourable.

Lišák Ski Site The ski site Kašperky offers 4 daily maintained and completely snow covered skiing pistes.

Nearby Attractions

The rock formation **Královský kámen** that offers breathtaking views and **Kohoutí kříž** (the Cock's Cross) at Nicov (8 km).

Obří hrad (8 km), a Celtic hill fortification.

Mouřelec (8 km) Romanesque-Gothic church of St. Moritz with a graveyard and ossuary from the 18th century

Lookout towers: **Sedlo** 902 m above sea level (7 km), **Javorník** 1065 m above sea level (14 km), **Svatobor** 871 m above sea level (20 km), **Poledník** 1315 m above sea level (30 km)

Čeňkova pila (16 km)) the confluence of the rivers Vydra and Křemelná, a hydro-electric power station

Castles: **Rabí** (26 km) and **Velhartice** (26 km) a part of Vydra and Křemelná



Kašperské Hory and Kašperk Castle



Town of Kašperské Hory

The town of Kašperské Hory is a natural centre of the central Šumava mountains and the highest positioned Gothic town in Bohemia (758 m above sea level). During the 14th century, the town experienced a significant development of underground gold mining. The importance of the locality was recognised by the Emperor Charles IV himself, among other things by laying out the cross-border Golden Trail and the foundation of the royal castle of Kašperk.



Historic Monuments

Archdeacon's church of St. Margaret a Gothic three-aisled basilica from the middle of the 14th century. In 1883, after a large-scale fire in the town, it was rebuilt in the Neo-Gothic style and a new tower was added to its west front.

Graveyard church of St. Nicholas the oldest preserved building on the site of the original and extinct medieval community. The Gothic three-aisled basilica of the local miners was built before 1330 and the church has preserved wall paintings from the 14th century. Adjacent to the church is the cemetery chapel of St. Anne, a traditional pilgrimage place.



Town hall a building of Renaissance origin with three decorated Baroque gables from the 17th century. On the ground floor, there is the town's cultural and information centre.

Pilgrimage Church of Our Lady of the Snows a church built in the Neo-Romanesque style from 1850 to 1867. It is located south-west of the city core.

Stone pillar dating back to 1630. Today it is located on the Šibeniční Hill from where you can enjoy excellent views of the town and Kašperk Castle.

Kašperk Castle

The majestic Gothic castle of Kašperk founded in 1356 by the Czech king and Roman emperor Charles IV rises 3 km north of Kašperské Hory. With its altitude of 886 m above sea level, Kašperk is the highest royal castle in Bohemia.



Kašperk is a rarely preserved example of the castle architecture of Charles IV. The castle has not been significantly modified since the end of the 15th century and, therefore, many of the original Gothic building elements and structures are still visible. For instance, the west tower has a preserved unique brick roof made of original and atypically shaped bricks.

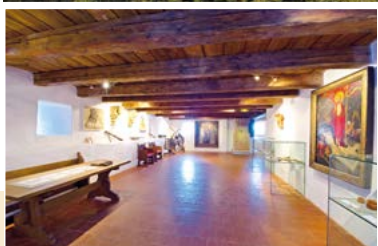


Below the church, there is the pilgrimage chapel of Our Lady of Klatovy called Grantl.

Description of the offered sightseeing tours

Kašperk offers two sightseeing tours that always include a unique view of the Šumava mountains from one of the castle towers.

The guided tour called **Life in the Castle** focuses on the everyday life and management of the castle including information of the preparation of meals, cleaning and hygiene in the Middle Ages. The tour covers the burgrave's house, palace, eastern tower and former castle chapel premises. At the end of the tour, the visitor is introduced to our idea of how people lived in a medieval castle through an original video projection.



The tour called **Castle Transformations** covers the historical civil engineering development from the castle foundation, medieval development to restoration projects in the recent past. The tour leads through the

carpenter's and stonemason's workshop, ruins of the castle palace and western tower up to a viewpoint into the county from the premises of the preserved original brick helmet-roof. There is also a video projection that shows the process of the construction, installation of furniture and extinction of a middle age chamber.

In 2021 we have reintroduced the popular **children's tours** either for younger children (elementary school stage 1 pupils) who are supposed to rescue an enchanted figure or older children (elementary school stage 2) who will learn how to build a Gothic castle, cathedral or bridge.

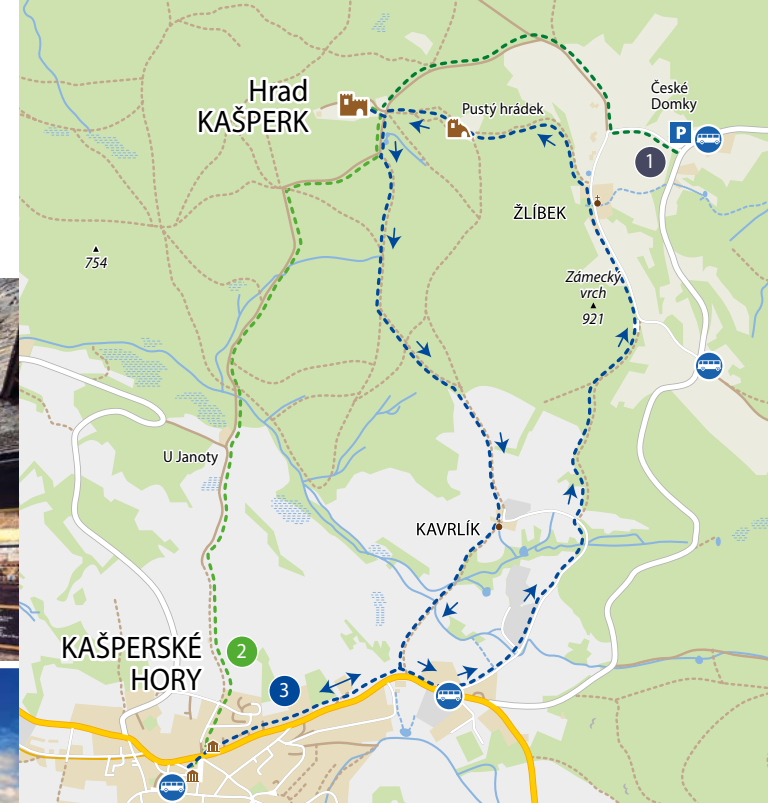
We recommend booking in advance at info@kasperk.cz.

Castle refreshment point and available service

The Kašperk castle is an intersection of hiking trails for hikers, bikers and, in winter, cross-country skiers. A border guardian trail (a national history circuit trail) and a number of marked hiking trails lead to the castle



The castle **courtyard is accessible free of charge**. There are public **barrier-free toilets**. The refreshment stand in the courtyard offers a variety of **refreshment products**, all of them being of local origin from the Šumava mountains be it something to eat from the grill or a beverage to refresh and quench your thirst. Popular products include the **Šumavěnka lemonade** (seven flavour available), coffee from the local roastery **Rósta Kafe** or original draft beer **Splhavec 10°** that is brewed specially for the castle in the **Kašperské Hory brewery**.



HOW TO GET TO THE CASTLE

- By car** Follow the road towards the town of Vimperk. At the end of Kašperské Hory there is a slight left turn onto a local road (there is a direction sign to the Kašperk Castle and direction Nezdice na Šumavě). After about three kilometres, there is a parking lot on the left-hand side. Then, you will walk approx. 1.5 m following the green marked green trail. *Handicapped drivers may use the parking at the foot of the castle. Only by prior arrangement at phone No. 724 850 932.*
- Walking** There are two hiking trails to the Kašperk castle. Both start at the square.
- Green hiking trail** (3 km, 1 hour walk) The trail rises to the Modrásek hotel in the upper part of the square (the blue facade). Turn to the left at the hotel to a narrower street and then keep walking along the green hiking trail. The trail descends to a valley (1 km) and then there is a 2 km climb to the castle.
- Blue educative hiking trail** (4 km, 1 hour walk) Follow the road heading to the town of Vimperk. You will pass by the school, down to a turn-off to a small road towards the settlement of Kavrlík (turn-off some 150 m behind a curve and small chapel). Before Kavrlík, the blue trail turns off the road and rises uphill along the forest path to the right. Then you will walk uphill following the blue hiking trail signs. The rising section is approx. 1 km long, thereafter, there is quite pleasant path section. The trail crosses the ruins of Pustý hrádek offering a scenic view of the Kašperk castle and its surroundings.



Municipal Cultural and Information Centre Kašperské Hory
Náměstí 1, 341 92 Kašperské Hory
tel: 376 503 413
e-mail: informace@kasphory.cz
www.kasphory.cz | www.kasperk.cz

The project was implemented with the financial support of the Plzeňský region www.turisturaj.cz



PLZEŇSKÝ KRAJ
Published by Kašperské Hory at 2022
Texts: MĚKIS | Martina Hamáková | Václav Kús
Photographs: archiv
Design a mapa © 2022 Hana Švarcová